

# ADITYA PHARMACY COLLEGE

Approved by AICTE & PCI – NEW DELHI, Affiliated to JNTU KAKINADA  
(Formerly known as Aditya Institute of Pharmaceutical Sciences & Research)

Ph: 98665 76663  
Email: [office@adityapharmacy.edu.in](mailto:office@adityapharmacy.edu.in)  
Website: [www.adityapharmacy.edu.in](http://www.adityapharmacy.edu.in)

## INSTITUTIONAL DISTINCTIVENESS



### ADITYA PHARMACY COLLEGE

(APPROVED BY AICTE, PCI, NEWDELHI & JNTU KAKINADA)

Aditya Nagar, ADB Road, Surampalem-533437

East-Godavari District, Andhra Pradesh, INDIA

Phone No.:0884-2326212, Fax:0884-2326203

Email: [office@adityapharmacy.edu.in](mailto:office@adityapharmacy.edu.in) : [www.adityapharmacy.edu.in](http://www.adityapharmacy.edu.in)



*b. p. s.*

PRINCIPAL  
Aditya Pharmacy College  
SURAMPALEM-533 437



# INSTITUTIONAL DISTINCTIVENESS

# 2016-2017



PRINCIPAL

Aditya Pharmacy College  
SURAMPALEM-533 437

### INDEX

<u>S. No</u>	<u>Title</u>	<u>Pg - No</u>
1	SECURITY SYSTEM	3 - 4
2	TRANSPORT	5 - 8



*b. s. s.*

PRINCIPAL

Aditya Pharmacy College  
SURAMPALEM-533 437



## SECURITY SYSTEM


One of the Utmost priorities is to provide safety and security to the staff and students. Our Aditya Pharmacy College is provided with best security for the girls and also women staff members. Aditya pharmacy college consists of large number of security guards who will monitor regularly. They will monitor the students to be in a discipline and well behavior, they will monitor the students to attend the classes in time. For the security of the girls in the college campus and hostel to restrict the unwanted entry at the entrance the people who enter in the premissis must show their ID Cards the students without ID cards will not be permitted in the campus without permission and the persons who are coming for visiting purpose should enter their name in the log book. Log book must be entered IN time and also OUT time.

Our college took an initiative to monitor 24/7 through surveillance through installing the Closed circuit (CC) around the campus wherever required.

Students and staff who are taken permission to go out should submit permission letter to the security guard. The college campus and hostel campus has provided with proper boundary wall with electrical fencing for the security of the girls. All the major and minor incidents will be solved by the security guard's major incidents such as fire accidents or any other kind of emergency conditions they will be in front line and save the lives and minor issues such as if the student will not attend the classes in time, they will ask the students to attend the classes if there is any kind of fights or issues, they will make them stop. If it is a major issue or major fight then they will intimate to the principal. They monitor near each and every place in the campus and will check whether they are attending to the classes or not.

If the students will not listen their words, then the security guards of Aditya Pharmacy college will bring notice to the principal and the student will be punished based on his/her irresponsible behavior or Act. For the hostlers during Sundays especially for girls they will not allow outside of the campus until their parents or relatives come. After the time limit, they ask the girls to come and take to the hostel campus immediately. Due the presence of a greater number of security guards there is much safety to the students and staff and there will be no issues will be arising. Security guards will present at everywhere in the campus such as entrance, playground, canteen, buses and will monitor during breaks after the break they will ask the student to go immediately to classes. No student is allowed outside during the class hour they will make sure that all the students are in the class hours during their class schedule.



  
PRINCIPAL  
Aditya Pharmacy College  
SURAMPALEM-533 437



# ADITYA PHARMACY COLLEGE

Approved by AICTE & PCI – NEW DELHI, Affiliated to JNTU KAKINADA  
(Formerly known as Aditya Institute of Pharmaceutical Sciences & Research)

Ph: 98665 7666

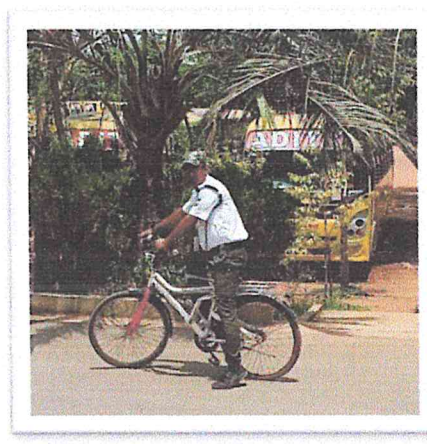
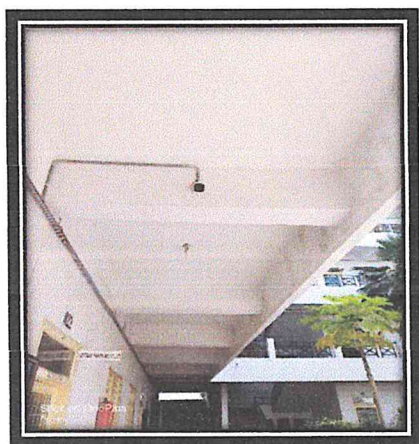
Email: [office@adityapharmacy.edu](mailto:office@adityapharmacy.edu)

Website: [www.adityapharmacy.edu](http://www.adityapharmacy.edu)

In Aditya Pharmacy college if there is any event or fest that is conducted in the college then the Security guards play a major role in monitoring the students because they will be a greater number of students even boys as well as girls. They will always make sure that girls are of safe side. They even ready to bear risk for the safety of the girl and also women staff. No outsider will be allowed with vehicles inside the campus. They will ask them to park the vehicles at parking zone. During morning time after 9:25am, no student is allowed to canteen they will ask the students immediately to go to their classes.

Aditya Pharmacy college security guards will never neglect their works they will monitor continuously and regularly. All the girl students and women staff feel very happy and protective under their security.

The security provision restricts the misbehavior, Sexual assault and other suspicious events.



  
PRINCIPAL  
Aditya Pharmacy College  
SURAMPAL-533 437




## TRANSPORT

The Current Burning Issues for any working people is the Transport. Our college is located far away from the commercial area which is free from pollution and enriched well with greenery and pleasant environment. As the college area is far away from the commercial area the transport to the college is bit difficult. Taking this into consideration Aditya college provides bus facility for the Staff and Students and makes the transport easier and safe for both the staff and students. Free Bus Facility is provided for Staff.

Aditya Pharmacy College provides transport facility to every corner of the district for the students and as well as free transport facility to the faculty, so that they can reach the institutions well in time and get back to their work with a safe journey as per schedule. The buses are well equipped with safety tools like fire extinguisher, Speed controller and first aid box. Bus facility is available from Kakinada, Rajahmundry, Yanam, Ramachandrapuram, Mandapata, Ravulapalem, Kovvur, Gokavaram, Yeleswaram, Tuni, Pavara, Peddapuram etc. Considering the notions and inhibitions of the society our institution took a major step to address the issues by providing the bus facility interior or rural areas to instill confidence in parents and people regarding the case and concern of our college for the students as well as security to the lady staff members and girl students. So that they encourage their wards to have professional education.

Better measures are taken to prevent ragging in the buses also. Far area buses are collective for both Students and Staff and for some area like Kakinada, Rajahmundry, Peddapuram, Pithapuram etc are being provided with separate staff buses. Safe and Secured journey is provided to the Staff by the Management. Bus timing is followed strictly so that staff can reach the destination within the time. If any accident occurs management responds immediately and solves the problem smoothly. Utmost care is given to the injured person and treatment is offered by the management only.



  
PRINCIPAL  
Aditya Pharmacy College  
SURAMPALAM-533 437



# ADITYA PHARMACY COLLEGE

Approved by AICTE & PCI – NEW DELHI, Affiliated to JNTU KAKINADA  
(Formerly known as Aditya Institute of Pharmaceutical Sciences & Research)

Ph: 98665 7666  
Email: [office@adityapharmacy.edu](mailto:office@adityapharmacy.edu)  
Website: [www.adityapharmacy.edu](http://www.adityapharmacy.edu)

Nearly 500 buses are available in the college for both staff and students. Buses are always maintained in a good condition. Our own college garage is maintained with in the campus for the maintenance of the buses. Buses are maintained according to the rules and regulations framed the government. The drivers appointed for the buses are the experienced persons and maintained with driving license also. Buses are well equipped with all the facilities. As the entrance is far from the road point college buses is being kept on the main road point for the students who are using the RTC bus facility. So that time will be reduced for the students and they can reach the college and classes with in the time period.

Security is provided with the sign boards for directing the buses in order to prevent the traffic and crowd with in the campus. While driving all the safety measures, precautions and rules being followed by the bus drivers for the safety of the students and staff. Due to this transport facility which is being offered by the Aditya Pharmacy College a Safe and Secured journey is being provided to the staff and students. Staff members really enjoy the safe and comfortable journey which is being offered by the Aditya Pharmacy College. Professional mechanics were being available within the campus and if any repair occurs during the journey, they will be sent to the spot immediately for the rectification of the problem. Every bus is being provided with the conductor also for the maintenance of the bus and gives support to the driver by signaling.



*b. o. n. l.*  
PRINCIPAL  
Aditya Pharmacy College  
SURAMPALEM-533 437



# ADITYA PHARMACY COLLEGE

Approved by AICTE & PCI – NEW DELHI, Affiliated to JNTU KAKINADA  
(Formerly known as Aditya Institute of Pharmaceutical Sciences & Research)

Ph: 98665 7666  
Email: [office@adityapharmacy.edu](mailto:office@adityapharmacy.edu)  
Website: [www.adityapharmacy.edu](http://www.adityapharmacy.edu)



  
PRINCIPAL  
Aditya Pharmacy College  
SURAMPalem-533 437